

REGO-FIX®



Made in
Switzerland



Hi-Q®/ERMXC intrLlox® and
Hi-Q®/ERMXC intrLlox®

Slip-off proof Mini Clamping Nuts

Hi-Q®/ERMX intRlox® and Hi-Q®/ERMXC intRlox® Slip-off proof Mini Clamping Nuts

The Hi-Q®/ERMX intRlox® and Hi-Q®/ERMXC intRlox® mini clamping nuts have a face-end profile designed to fit the spanner. This special profile prevents from slipping-off when tightening or loosening the nut.

- Slip-off proof with self locking profile
- Special surface treatment for higher clamping force
- Corrosion resistant surface
- Hi-Q®/ERMXC intRlox® suitable for REGO-FIX® sealing disks (DS/ER) and coolant flush disks (KS/ER)
- For ER collets in accordance with DIN 6499/ISO 15488 (REGO-FIX® ER Standard and ER-UP), with microbore (ER-MB), metallic sealed type collets (ER-DM), tapping collets (ER-GB and ER-ET1)
- Suitable for ERM tool holders with fine thread
- Hi-Q®/ERMXC intRlox® nut with sealing disks or coolant flush disks can be used with coolant pressures up to 150 bar

Benefits

- + Safe handling with slip-off proof design
- + Slip-off proof design with all advantages of the regular mini clamping nuts
- + Easy and safe clamping with V-E MX Spanner / Wrench Head Extensions for applications with little room for spanners

With slim
nut profile

Compatible
with DIN 6499
ER collets

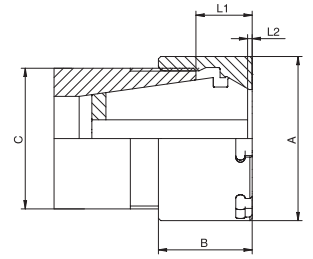
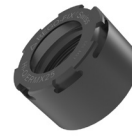
Compatible with
available coolant
flush and sealing
disks



Swiss
Precision
Tools

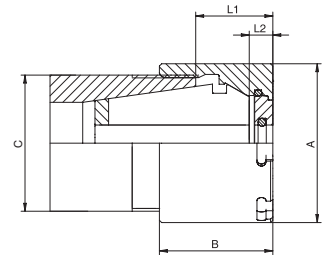
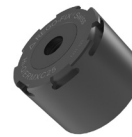
Hi-Q®/ERMx intRlox® Mini Clamping Nuts

Type	Part No.	A	B	C	L1	L2
Hi-Q®/ERMx 11	3511.60000	12	10,8	M13 x 0,75	4,3 – 6,1	1,5
Hi-Q®/ERMx 16	3516.60000	22	18,4	M19 x 1,00	8,0 – 11,5	0,9
Hi-Q®/ERMx 20	3520.60000	28	19,0	M24 x 1,00	8,0 – 11,5	–



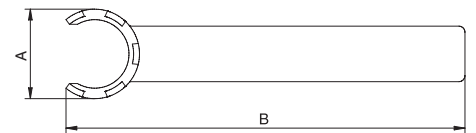
Hi-Q®/ERMx intRlox® Mini Clamping Nuts for Coolant Through Tools

Type	Part No.	A	B	C	L1	L2
Hi-Q®/ERMx 16	3516.70000	22	22,0	M19 x 1,00	11,5 – 15,0	4,5
Hi-Q®/ERMx 20	3520.70000	28	24,0	M24 x 1,00	13,0 – 16,5	5,0



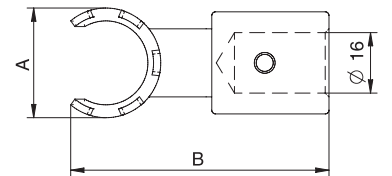
E MX Spanners

Type	Part No.	A	B
E 11 MX	7118.11000	17,0	96,5
E 16 MX	7118.16000	22,5	117,5
E 20 MX	7118.20000	29,0	129,5



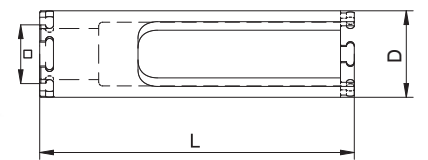
A-E MX Wrench Heads

Type	Part No.	A	B
A-E 11 MX	7158.11000	17,0	55,5
A-E 16 MX	7158.16000	22,5	56,5
A-E 20 MX	7158.20000	29,0	68,5



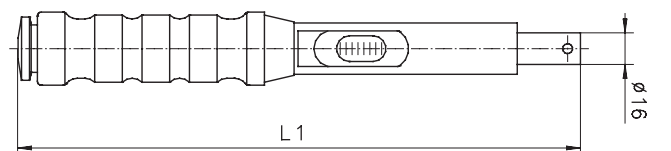
V-E MX Spanner / Wrench Head Extensions

Type	Part No.	D	L	□
V-E 11 MX	7159.11000	17,0	60	1/4"
V-E 16 MX	7159.16000	22,5	80	1/4"
V-E 20 MX	7159.20000	29,0	95	1/4"



TORCO-FIX Torque Wrenches

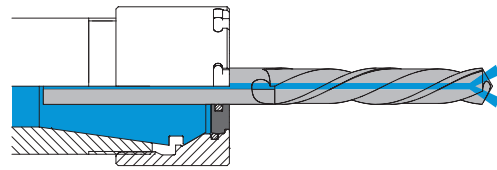
Type	Part No.	Range [Nm]	L1 [mm]
TORCO-FIX 0	7150.02025	2 – 25	279,0
TORCO-FIX I	7150.05050	5 – 50	329,0
TORCO-FIX II	7150.20200	20 – 200	467,5
TORCO-FIX III	7150.60300	60 – 300	558,5



Matching Products

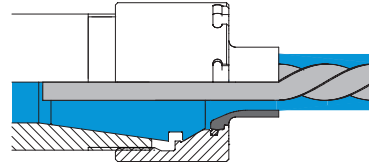
REGO-FIX® DS / ER Sealing Disks

Type	Sealing Capacity [mm]
DS/ER 16	2.50 – 10.00
DS/ER 20	2.50 – 13.00



REGO-FIX® KS / ER Coolant Flush Disks

Type	Ø Range [mm]
KS/ER 16	3.00 – 10.00
KS/ER 20	3.00 – 12.70



REGO-FIX® ER Standard and ER-UP Collets

Type	Clamping Range [mm]
ER 16/ER 16-UP	0.50 – 10.00
ER 20/ER 20-UP	0.50 – 13.00

REGO-FIX® ER-DM metallic sealed Type Collets

Type	Clamping Range h9 [mm]
ER 16-DM	3.00 – 10.32
ER 20-DM	3.00 – 13.00

REGO-FIX® ER-MB Microbore Collets

Type	Clamping Range [mm]
ER 16-MB	0.20 – 0.90

ET1 Tapping Collets with Length Adjustment

Type	Clamping Range [mm]
ET1-16	1.40 – 6.30
ET1-20	2.20 – 7.00

REGO-FIX® ER-GB Tapping Collets without Length Adjustment

Type	Clamping Range [mm]
ER 16-GB	4.00 – 9.00
ER 20-GB	4.00 – 12.00

Recommended Torques

Collet	Ø [mm]	Torque [Nm]	Torque Wrenches [TORCO-FIX]
ER 16 MB	0.2 – 0.9	8	0, I
ER 16	1.0	8	0, I
	1.5 – 3.5	20	0, I
	4.0 – 4.5	24	0, I
	5.0 – 10.0	24	0, I
ER 16 – GB	4.0 – 4.5	24	0, I
	5.0 – 10.0	24	0, I
ER 20	1.0	16	0, I
	1.5 – 6.5	28	0, II
	7.0 – 13.0	28	0, II
ER 20 – GB	1.5 – 6.5	28	0, II
	7.0 – 13.0	28	0, II